

PRODUCT SPECIFICATIONS

Spec No.

8265101 C

Model No.

2M265-M12WJ

Page

3/10

This Specifications is based on the General Rules of Inspection for Electron Tubes ED-1101 and the Testing Methods for Continuous Wave Magnetrons ED 1501 set by the Electronic Industries Association of Japan (EIAJ).

Description	Continuous wave Magnetron (Fixed Frequency, Packaged Magnet, Probe Output)											
Outline	Refer Outline Drawing						Net weight		Approx. 3.6 Kg			
Absolute Maximum Ratings	Item	Ef	Ef	tk	Ebm	Ib	Ibm	Pi	σL	Tp	Tc	Storage
		Stand-by	Operation	(³)						(⁴)	(⁴)	
	Unit	V	V	sec	kV	mAdc	A	kW	—	°C	°C	°C
	Max.	4.4	(²)	—	5.5	900	3.1	4.7	2	180	120	60
Min.	3.8	(²)	5	—	—	—	—	—	—	—	-30	
Standard Test Conditions (¹)	4.0	2.2	8	—	840	—	—	MAX 1.1	—	—	—	

Test Specifications

Test Item	Test Method (ED-1501)	Test Conditions (¹)	Symbol	Nominal	Limit		Unit
					Min.	Max.	
* Filament Current	4.1.1	tk-120s	If	22	20	24	A
Peak Anode Voltage	4.3.1	(⁵)	ebm	5.1	4.9	5.3	kV
Average Output Power	4.3.3.1	(⁵)	Po(1)	3000	2800	—	W
Frequency	4.3.4	(⁵)	f	2455	2440	2470	MHz
Breakdown Voltage	4.2	Eb=10kVdc or 7.1kVac (⁶) gradual voltage up	BVaf	No unusual phenomenon occur			
* Stability Moding	4.3.11.2	$\sigma L=2$ or less	ST	No moding occurrence			
Emission Moding	4.3.11.3	Ef=1.7V	Efm	No moding occurrence			
Insulation	—	1kVdc	Raf	—	100	—	M Ω

Classification of tests.

** mark: Type approval Test.

* mark: Design Test.

None: Production Test.

10/6/1999

National/Panasonic

PRODUCT SPECIFICATIONS

Spec No.

B265101 G

Model No.

2M265-M12WJ

Page

5/10

Fig.1 Cut back of Filament voltage on operation condition

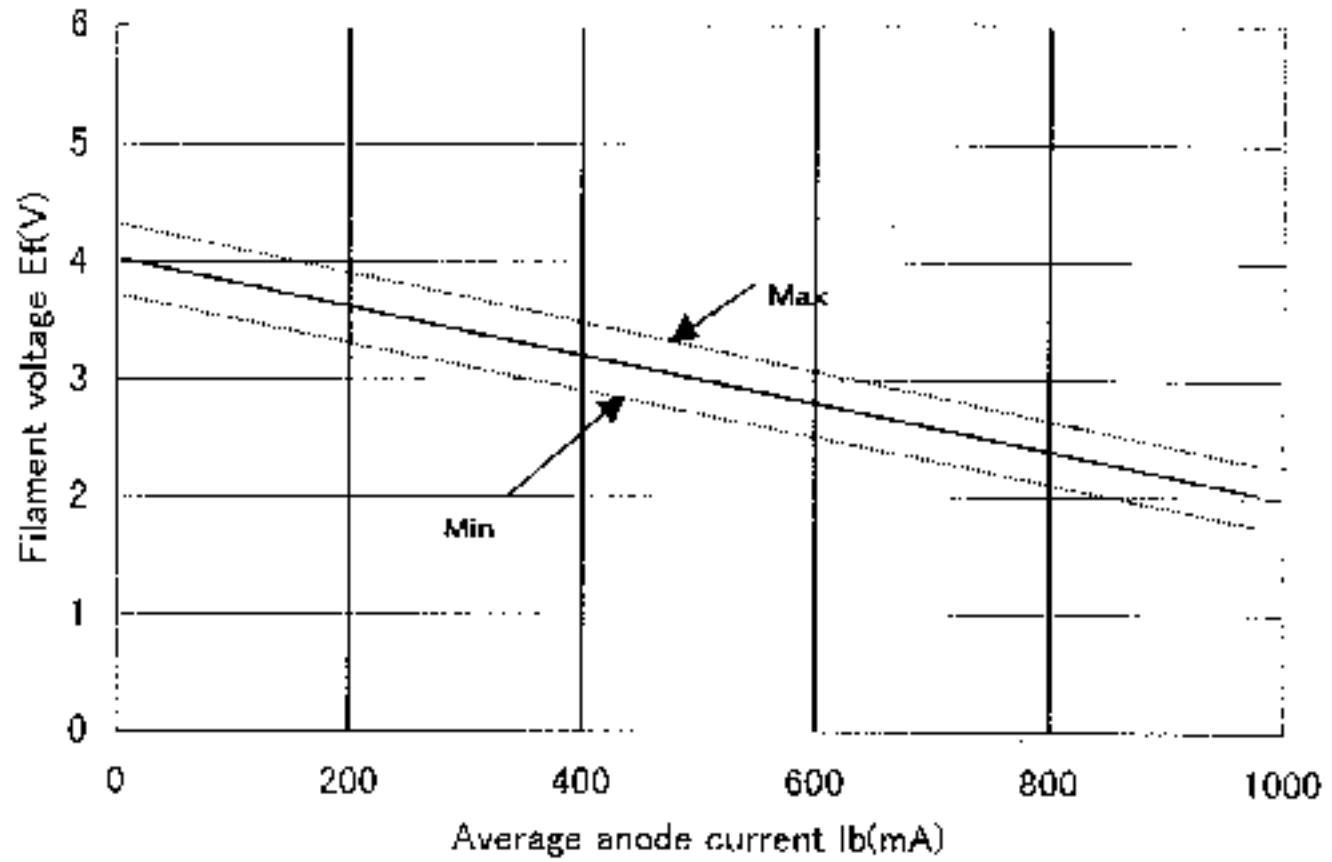
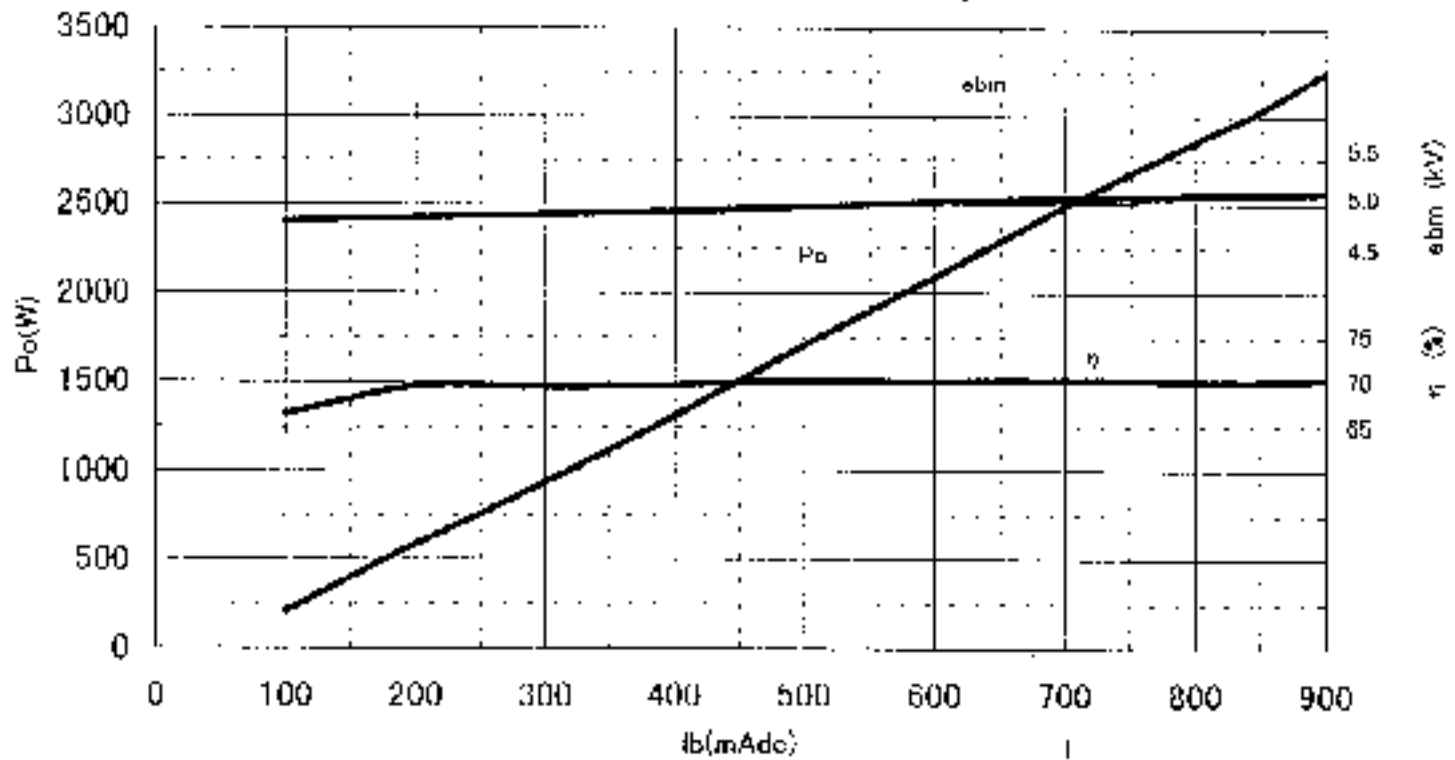


Fig.2 Performance Chart



10/6/1999

National/Panasonic

OUTLINE DRAWING

Spec No.

B265101 C

Model No.

2M265-M:2WJ

Page

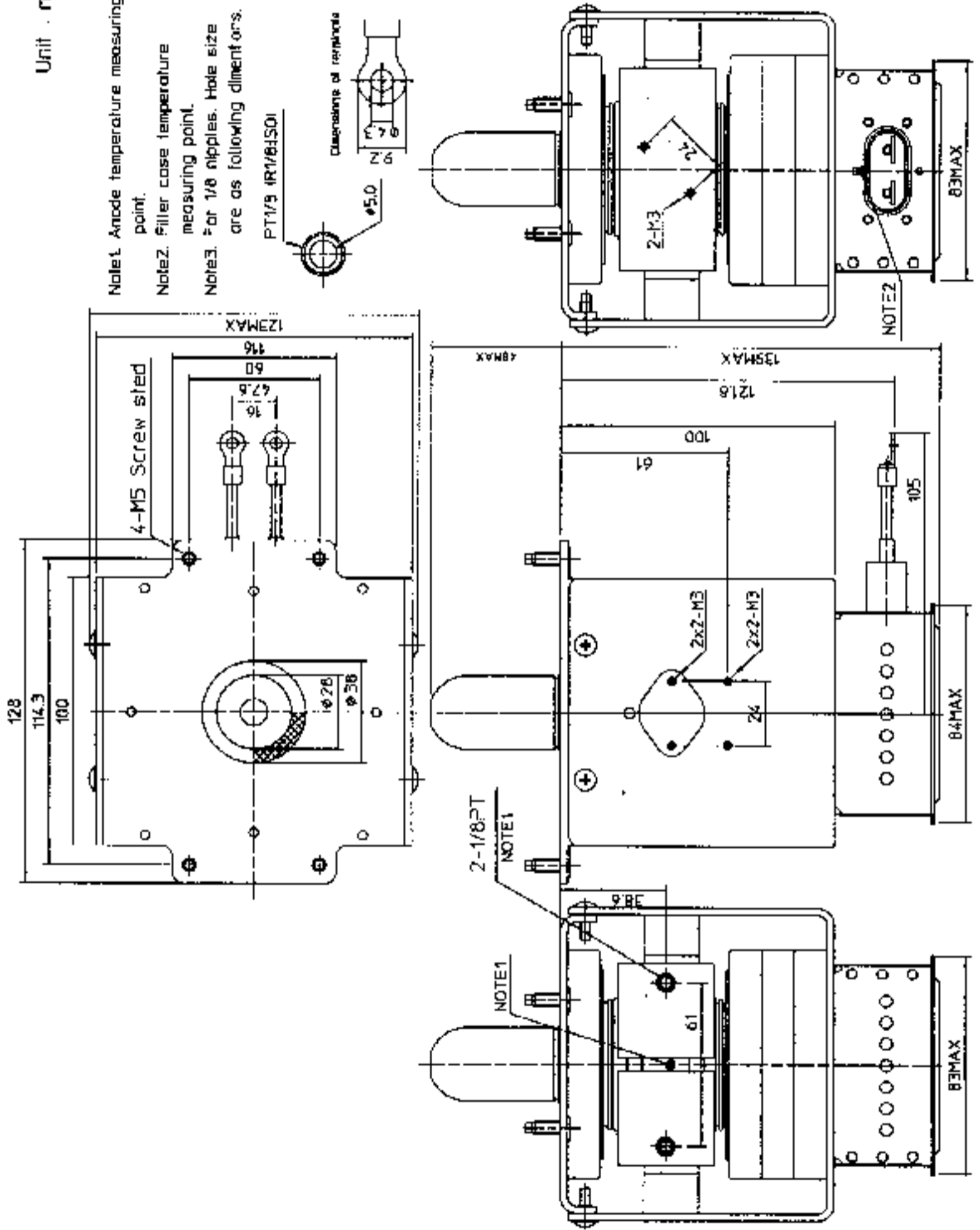
8/10

Unit . mm

- Note1. Anode temperature measuring point.
- Note2. Filler case temperature measuring point.
- Note3. For 1/8 nipples. Hole size are as following dimensions.

PT1/8 (R1/8:150)

Dimensions of nipple



10/6/1999

National/Panasonic